



DWYER INSTRUMENTS, INC.

www.dwyer-inst.com



pressure

air quality

flow

temperature

level

process control

test equipment

valves

RIGHT CHOICE. RIGHT PRICE. RIGHT NOW.

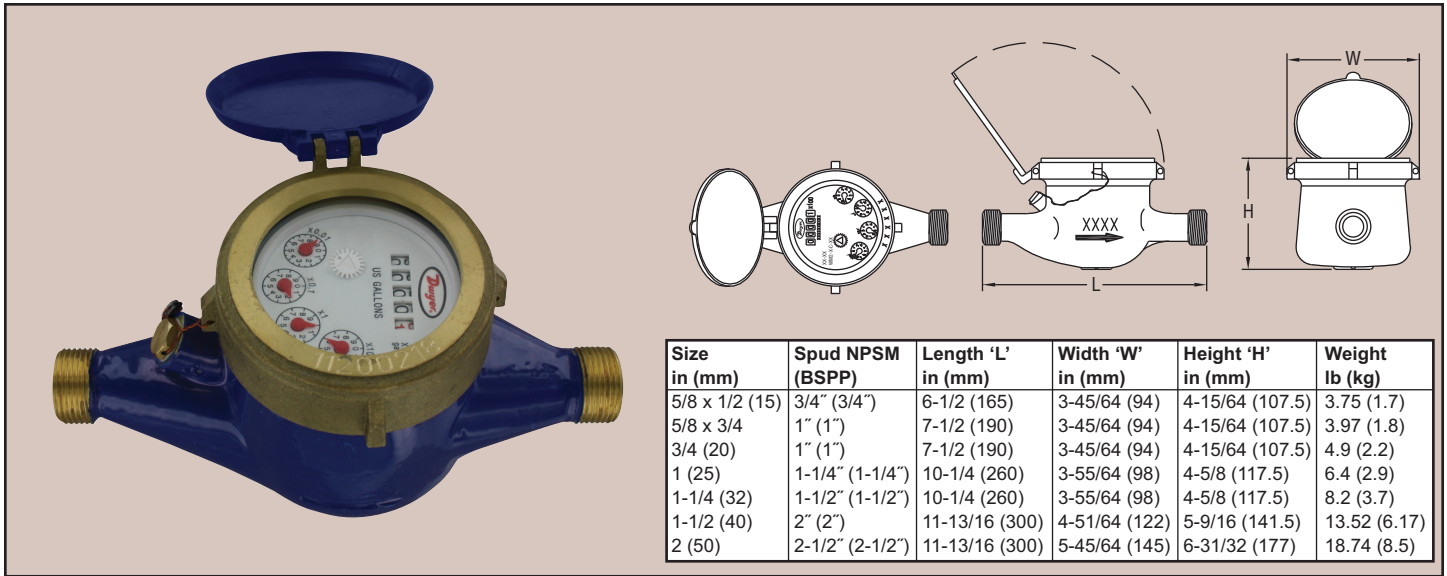
2014



Series
WM2

Multi-Jet Water Meter

Economical, Brass Body, Dry Dial



| Size in (mm) | Spud NPSM (BSPP) | Length 'L' in (mm) | Width 'W' in (mm) | Height 'H' in (mm) | Weight lb (kg) |
|-----------------|---------------------|-----------------------|----------------------|-----------------------|-------------------|
| 5/8 x 1/2 (15) | 3/4" (3/4") | 6-1/2 (165) | 3-45/64 (94) | 4-15/64 (107.5) | 3.75 (1.7) |
| 5/8 x 3/4 | 1" (1") | 7-1/2 (190) | 3-45/64 (94) | 4-15/64 (107.5) | 3.97 (1.8) |
| 3/4 (20) | 1" (1") | 7-1/2 (190) | 3-45/64 (94) | 4-15/64 (107.5) | 4.9 (2.2) |
| 1 (25) | 1-1/4" (1-1/4") | 10-1/4 (260) | 3-55/64 (98) | 4-5/8 (117.5) | 6.4 (2.9) |
| 1-1/4 (32) | 1-1/2" (1-1/2") | 10-1/4 (260) | 3-55/64 (98) | 4-5/8 (117.5) | 8.2 (3.7) |
| 1-1/2 (40) | 2" (2") | 11-13/16 (300) | 4-51/64 (122) | 5-9/16 (141.5) | 13.52 (6.17) |
| 2 (50) | 2-1/2" (2-1/2") | 11-13/16 (300) | 5-45/64 (145) | 6-31/32 (177) | 18.74 (8.5) |

The Series WM2 Multi-Jet Water Meter is ideal for commercial and industrial applications. The multi-jet design allows for simplicity and accuracy with wide flow ranges, even in low flow applications. The magnetically driven, hermetically sealed register will not leak or fog and is completely separated from the water. These water meters are designed for long service life and maintenance-free operation, even under harsh conditions.

FEATURES

- Magnetic drive – water is sealed from entering register
- Dry dial won't discolor or fade – hermetically sealed from the elements
- Integral strainer that protects meters from particulate damage
- Pointer-roller indicator
- Frost resistant body
- Includes two mounting adapters (couplings)

SPECIFICATIONS

Service: Water.

Wetted Materials:

Body: Brass, polyethylene;

Couplings: Brass;

Measuring Chamber: Polyethylene, ABS plastic, ferrite, acetal.

Flow Range: See model chart.

Accuracy: Transitional Flow: ±5%; Nominal Flow: ±2%.

Temperature Limit: 104°F (40°C).

Pressure Limit: 232 psi (16 bar).

Pressure Drop: See service manual.

Totalizing Display Maximum: See model chart.

Mounting Orientation: Horizontal.

Weight: See dimension chart.

| Model | Size | Coupling Size | Max Flow | Nominal Flow Range | | Transitional Flow | Display Max (Gallons) |
|------------|------------|------------------|----------|--------------------------|--|-------------------|--------------------------|
| | | | | GPM (Gallons Per Minute) | | | |
| WM2-A-C-01 | 5/8 x 1/2" | 1/2" NPT | 20 | 1 to 10 | | 0.25 | 9,999,999.99 |
| WM2-A-C-02 | 5/8 x 3/4" | 3/4" NPT | 20 | 1 to 20 | | 0.25 | 9,999,999.99 |
| WM2-A-C-03 | 3/4" | 3/4" NPT | 30 | 2 to 30 | | 0.25 | 99,999,999.9 |
| WM2-A-C-04 | 1" | 1" NPT | 50 | 3 to 50 | | 0.75 | 99,999,999.9 |
| WM2-A-C-06 | 1-1/2" | 1-1/2" NPT | 100 | 5 to 100 | | 1.5 | 99,999,999.9 |
| WM2-A-C-07 | 2" | 2" NPT | 160 | 80 to 160 | | 2 | 99,999,999.9 |

| Model | Size | Coupling Size | Max Flow | Nominal Flow Range | | Transitional Flow | Display Max (m³) |
|------------|-------|------------------|----------|--------------------|--|-------------------|---------------------|
| | | | | m³/h | | | |
| WM2-B-C-08 | 15 mm | 1/2" BSPT | 3 | 0.12 to 1.5 | | 0.03 | 99,999.9999 |
| WM2-B-C-10 | 20 mm | 3/4" BSPT | 5 | 0.2 to 2.5 | | 0.03 | 99,999.9999 |
| WM2-B-C-11 | 25 mm | 1" BSPT | 7 | 0.25 to 3.5 | | 0.07 | 99,999.9999 |
| WM2-B-C-12 | 32 mm | 1-1/4" BSPT | 12 | 0.48 to 6 | | 0.12 | 99,999.9999 |
| WM2-B-C-13 | 40 mm | 1-1/2" BSPT | 20 | 0.8 to 10 | | 0.2 | 999,999.9999 |
| WM2-B-C-14 | 50 mm | 2" BSPT | 30 | 1.2 to 15 | | 0.12 | 999,999.9999 |

FLOW

Watermeters